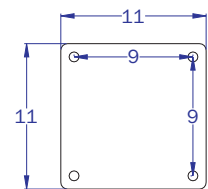
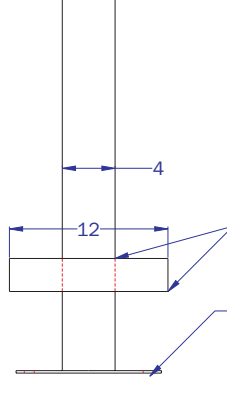
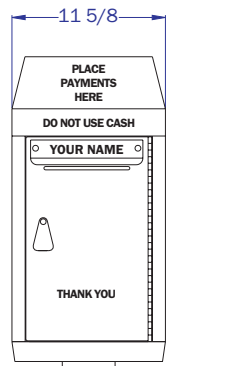


LEFT SIDE VIEW



BASE PLATE FOOT PRINT



FRONT VIEW

SILICONE COVER PLATE AROUND PEDESTAL AFTER INSTALLED

LEVEL WITH SS WASHERS IF NEEDED

M500-OC INCLUDES

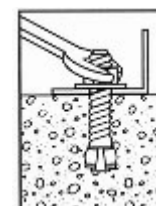
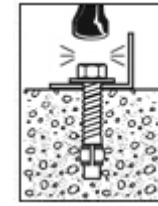
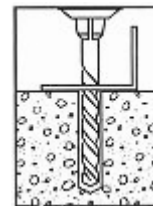
PART ID	DESCRIPTION
0105	A STAINLESS STEEL "FOLD-WELD" CAP AND CABINET IS 12 X 12 X 22 INCHES HIGH. INCLUDES INDUSTRIAL HINGED DOOR, BRASS WORKS LOCK AND TWO DOUBLE-BITTED KEYS, STRONG CAM, HEAVY GAUGE BASE PLATE, LOCK COVER, FLOOR PANEL, RAINSHIELD INSTALLED ABOVE PAYMENT SLOT AND (3) BLACK SIGNS: "PLACE PAYMENTS HERE", "DO NOT USE CASH", AND "THANK YOU".
1002	ID PLATE 1.25 X 8.5 INCH WIDE, ENGRAVED WITH YOUR NAME
3306	30 INCH STAINLESS STEEL PLATFORM PEDESTAL THICK WALLED 4 X 4 INCH SS POST WELDED TO HEAVY TOP AND BASE PLATE WITH COVER, INCLUDES (4) .5 INCH SS CARRIAGE HEAD FASTENERS FOR ATTACHING PEDESTAL TO CABINET AND (4) .5 INCH SS WEDGE ANCHORS FOR INSTALLATION INTO CONCRET

ACCESSORY OPTIONS

PART ID	DESCRIPTION
0601	DOUBLE LOCK DOOR PANEL WITH (2) EIGHT TUMBLER, ALL BRASS WORKS LOCKS AND (2) DOUBLE-BITTED KEYS FOR EACH LOCK
0609	"CLOSED" SLOT COVER ATTACHES INSIDE WITH (2) WING NUTS
0704	SECOND PAYMENT SLOT .25 X 6.5 INCH SLOT OPENING, INSTALLED OPPOSITE PRIMARY SLOT, RAINSHIELD INCLUDED
0801	ENVELOPE HOLDER 8 X 4.5 INCHES WIDE [25 CAPACITY]
0802	ENVELOPE HOLDER 10.5 X 4.5 INCHES WIDE [25 CAPACITY]
0803	ENVELOPE HOLDER 10.5 X 4.5 INCHES WIDE [100 CAPACITY]
1008	CUSTOM VINYL MESSAGE AND/OR COLOR
1101	OCEAN FRONT FINISH POWDER COAT SALT RESISTANT FINISH, FOR EACH CABINET, PEDESTAL, OR PAIR OF PROTECTOR POSTS
1102	POWDER COAT ENTIRE CABINET ONE COLOR
1103	SPECIAL COLOR ORDER CALL FOR SAMPLES

30" PLATFORM PEDESTAL ANCHORS WITH (4) 1/2" SS ANCHORS

1. MARK AND DRILL HOLE SAME SIZE AS ANCHOR
2. TAP IN ANCHOR
3. SECURE WITH WRENCH



THE INFORMATION CONTAINED IN THIS DRAWING IS THE SOLE PROPERTY OF AMERICAN SECURITY CABINETS. ANY MISUSE IN PART OR AS A WHOLE IS STRICTLY PROHIBITED BY AMERICAN SECURITY CABINETS.

AMERICAN SECURITY CABINETS
120 6TH AVE. NORTH
ST. CLOUD, MN 56303
320-253-3044

TITLE
**MODEL 500-OC
WALK-UP ON CONCRETE CUT SHEET**

PART NAME
M500-OC

REV	DESCRIPTION	DATE	BY	TOL: UNLESS OTHERWISE SPECIFIED ANGLES: ±1° .XX±.030 .XXX±.010
	RELEASE	03-01-12	JRS	

SHEET	PART ID #	SCALE	REV
1 OF 1	SEE ABOVE	NTS	